

## Panel Leg Series, Treatment Table with Full Shelf



### MODELS: 91020-27 & 91020-30


- All laminate construction
- Sleek panel leg design
- Full laminate shelf
- Adjustable backrest with 6 settings of approximately: 27°, 36°, 43°, 50°, 55° & 60°
- Scratch resistant topcoat finish
- Fast and easy assembly
- Ships flat for easy handling and extra savings
- Seamless rounded corner top
- 2" firm foam padding (5 cm)
- Heavyweight, knit-backed upholstery
- 400 lbs. load capacity under normal use (181.43 kg)

### SPECIFICATIONS

|          |                       |
|----------|-----------------------|
| 91020-27 | 72" L x 27" W x 31" H |
| 91020-30 | 72" L x 30" W x 31" H |



### Prop 65 Warning



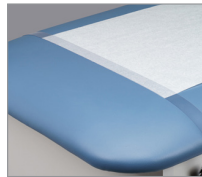
**WARNING:** This product can expose you to chemicals, including diisononyl phthalate (DINP), which is known to the State of California to cause cancer. For more information go to [www.P65Warnings.ca.gov](http://www.P65Warnings.ca.gov).

2

### Options



034– Paper Dispenser & Cutter Combo



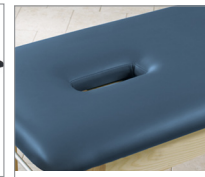
040– Paper Cutter



030– Paper Dispenser



088–Flat Top



009–Nose Hole

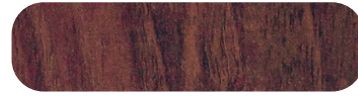
### Laminate Colors



Gray



Maple



Dark Cherry

### Upholstery Colors



Slate Blue



Wedgewood



Royal Blue



Desert Tan



Burgundy



Country Mist



Warm Gray



Gunmetal



Black