



Completely Coordinated.
Completely Cost Effective.
Completely Easy.

OCEAN COMMOTION SCALE COMPLETE



Imagination Series, Ocean Commotion, Pediatric Scale Table

MODEL 7836

TABLE FEATURES

- Clinton original illustrations
- Easy to clean laminate surfaces
- All graphics are permanently embedded in the high pressure laminate and will not peel off
- Graphics are on one long side and two short ends. Back is slate gray. Only manufactured as pictured.
- Comfortable work height of 36"
- Top is rimmed on three sides for safety
- Top's front and back rim edges are beveled and the corners rounded for safety
- Easy-clean, replaceable center pad
- Built-in infantometer with folding ends for measuring height
- Easy access to weight, measurement and storage
- Choose to access concealed paper dispenser from either end
- Recessed front toe kick
- Easy-clean all laminate base
- Ample 2 door and 1 drawer storage
- Soft-close, door hinges



MODEL 7836 SPECIFICATIONS

43"L x 24"W x 38.5"H

SCALE FEATURES

- Dependable, accurate Doran® scale
- Easy-read digital display
- Auto calibration on start-up
- Auto shut-off
- Electric or battery operation (6 AA batteries required)
- Weights in increments of lbs., ozs. or kilos
- Minimum registered weight is 5 lbs.—Maximum weight for scale is 40 lbs.

California residents please be advised of the following, pursuant to Proposition 65:



WARNING: This product can expose you to chemicals, including chromium, which is known to the State of California to cause cancer or reproductive toxicity. For more information go to www.P65Warnings.ca.gov.

1



Options



78-W Whale Scale Pal



066 Door & Inside Latch Combo



055 Drawer Locks

Upholstery



Gunmetal

Features



Infantometer

Built-in infantometer with folding ends for measuring height



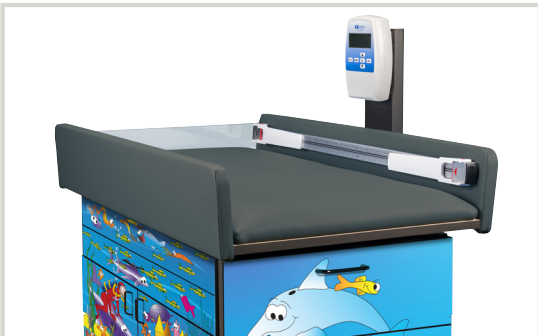
Paper Dispenser

Choose to access concealed paper dispenser from either end



Rimmed Top with Beveled Edges

Top is rimmed on three sides for safety and the front and back rim edges are beveled and the corners rounded for safety



Padded Top

Easy-clean, padded, upholstered top for comfort



Scale Head

Easy-read, digital display

Ocean Commotion Cabinets

MODEL 6136-BW

"Ocean Commotion" Base Cabinets

4 doors with adjustable shelves and 3 drawers.
Shipped in one unit.

"Ocean Commotion" Wall Cabinets

4 doors with adjustable shelves. Shipped in one unit.

Base & wall cabinets are only sold in sets

- Clinton original illustrations
- Pre-assembled units save time
- Easy-clean all laminate construction
- All graphic are permanently embedded in the high pressure laminate and will not peel off
- Tough, chip-resistant PVC edges
- Assembled with steel fasteners
- 4 adjustable leveling feet on each unit
- 3-way adjustable, soft-close 110° hinges
- Flat panel drawer fronts with metal sides that hold up to 75 lbs.
- Recessed toe kick
- Easy hook and rail installation for upper cabinets
- Slate Gray edgebanding on all edges
- Customizable with 4 options
- Easily moves for relocation
- Drawers can be added to any base unit
- Doors and drawer can be moved to accommodate sink location
- Shown with optional sink and faucet



SPECIFICATIONS

BASE: 60"L x 18"D x 35"H

WALL: 60"L x 12"D x 24"H

California residents please be advised of the following, pursuant to Proposition 65:

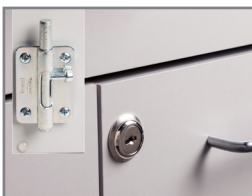


WARNING: This product can expose you to chemicals, including chromium, which is known to the State of California to cause cancer or reproductive toxicity. For more information go to www.P65Warnings.ca.gov.

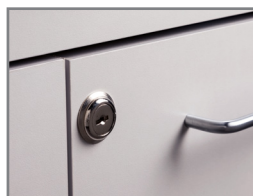
1



Options



066 Door & Inside Latch Combo



055 Door Locks



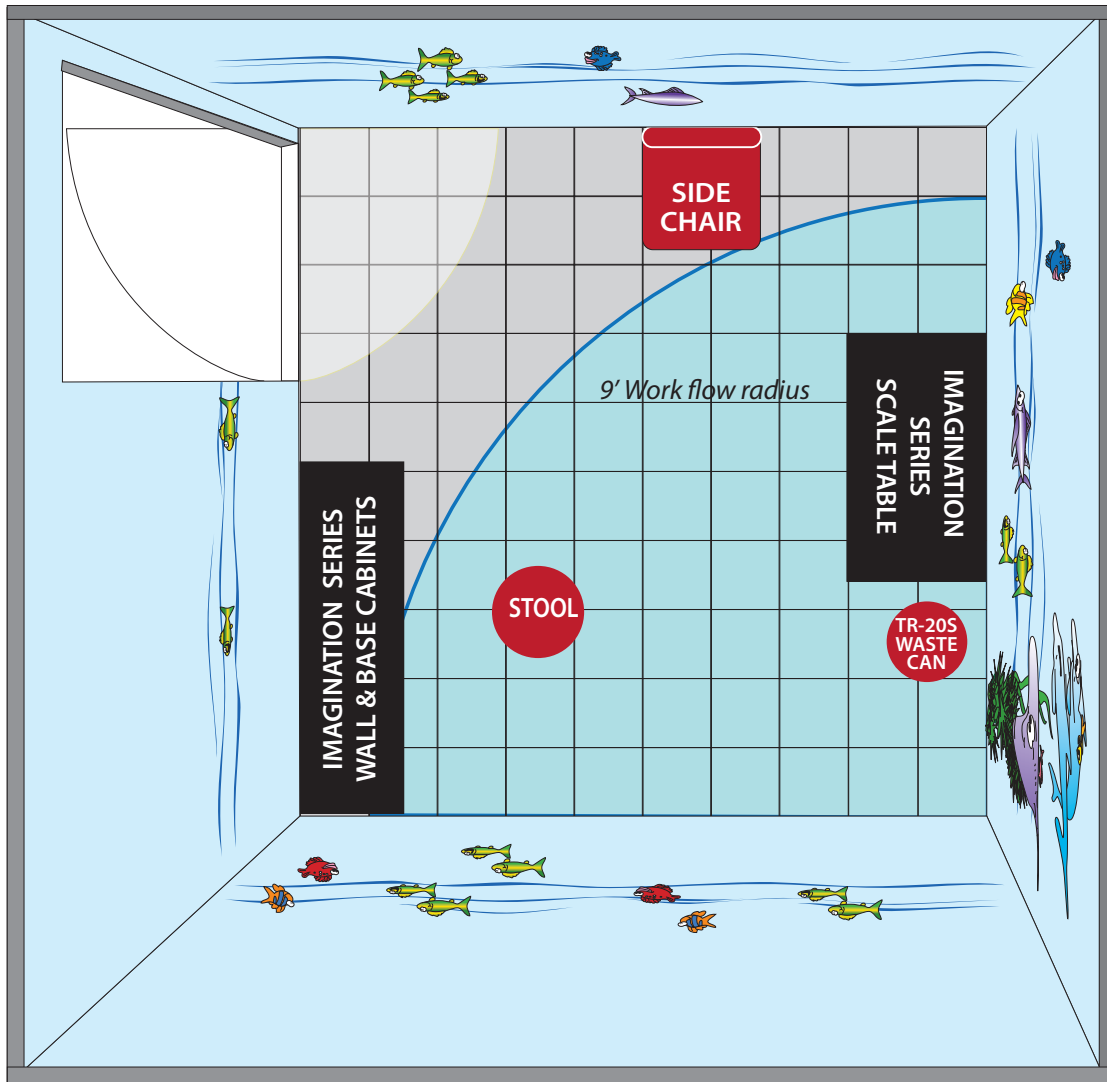
044 Add a Cabinet Drawer



22 Sink & Faucet

10' X 10' FLOOR PLAN

Optional Items in Red



1 Square = 1 foot

NOTE: These are suggested floor plans. Please check local building and fire codes before beginning any construction or renovations.

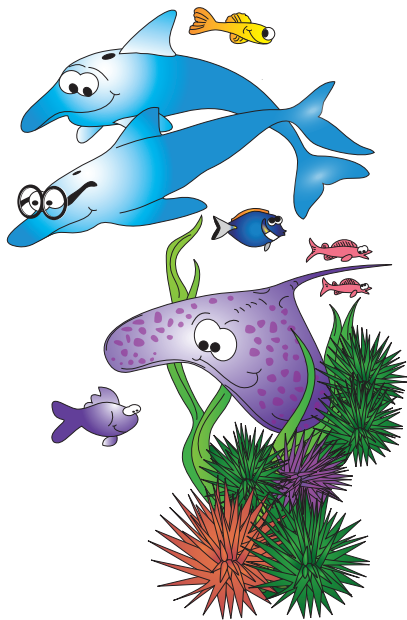


Walls
786 Highland Breeze

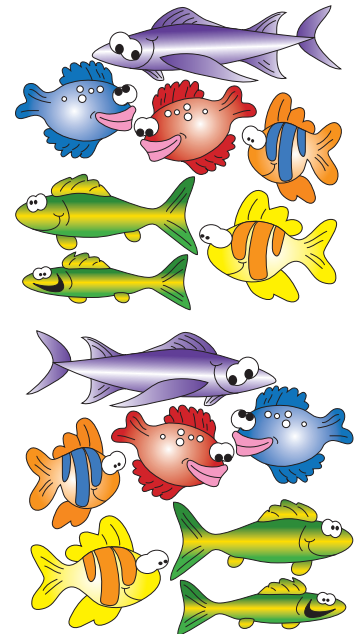


Flooring
Medintone™ H5300 Cool White

OPTIONAL ACCESSORIES *(Shown in photo on front)*



- **08-CC** Sea Life Wall Sticker
- **07-CC** Fish Left Grouping/Fish Right Grouping Wall Stickers (parts of 2 sets each)
- **06-CC** Ocean Wave Wall Sticker (parts of 3 sets each)
- **C-40** Side Chair in Royal Blue upholstery (-3RB)
- **T-70** Clear Labeled Sundry Jars (5 in set)
- **GS-3022** Double Slimline Stainless Steel Glove Box Holder



800-441-9131 • 717-848-3519

Toll-Free Fax 866-522-1233

Fax 717-843-5871

www.clinton-ind.com