



Completely Coordinated.
Completely Cost Effective.
Completely Easy.

COOL CAMPER COMPLETE



Fun Series, Cool Camper, Treatment Table



FRONT & DOOR SIDE



BACK & OPPOSITE SIDE

MODEL 7050

- Clinton original illustrations
- All graphics are permanently embedded in the high pressure laminate and will not peel off
- Graphics are on two long side and two short ends, manufactured as pictured
- Optional locking doors available
- All colors are as shown
- 3 Storage compartments with one adjustable shelf each
- Soft-close, door hinges
- Chip resistant PVC edges
- Seamless rounded corner top
- Premium, stain resistant, woven knit back upholstery (black)
- Adjustable feet
- Doors are only on one side
- Paper dispenser included
- Special order reverse side doors are available
- 350 lbs. load capacity under normal use

7050 SPECIFICATIONS

72"L x 27"W x 34"H

California residents please be advised of the following, pursuant to Proposition 65:

WARNING: This product can expose you to chemicals, including chromium, which is known to the State of California to cause cancer or reproductive toxicity. For more information go to www.P65Warnings.ca.gov.

1



Options



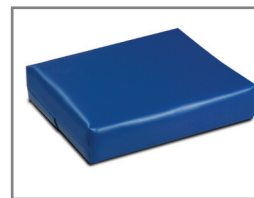
066 Door & Inside Latch Combo



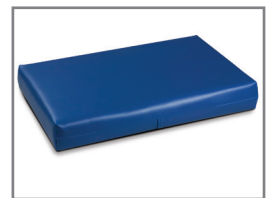
055 Door Locks



040 Paper Cutter



20 Small Pillow



60 Large Pillow

Upholstery



Black

Cool Park Campgrounds Cabinets

MODEL 6150-BW

"Cool Park Campgrounds" Base Cabinets

4 doors with adjustable shelves and 3 drawers.
Shipped in one unit.

"Cool Park Campgrounds" Wall Cabinets

4 doors with adjustable shelves. Shipped in one unit.

Base & wall cabinets are only sold in sets

- Clinton original illustrations
- Pre-assembled units save time
- Easy-clean all laminate construction
- All graphic are permanently embedded in the high pressure laminate and will not peel off
- Tough, chip-resistant PVC edges
- Assembled with steel fasteners
- 4 adjustable leveling feet on each unit
- 3-way adjustable, soft-close 110° hinges
- Flat panel drawer fronts with metal sides that hold up to 75 lbs.
- Recessed toe kick
- Easy hook and rail installation for upper cabinets
- Slate Gray edgebanding on all edges
- Customizable with 4 options
- Easily moves for relocation
- Drawers can be added to any base unit
- Doors and drawer can be moved to accommodate sink location
- Shown with optional sink and faucet



SPECIFICATIONS

BASE: 60"L x 18"D x 35"H

WALL: 60"L x 12"D x 24"H

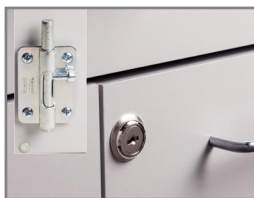
California residents please be advised of the following, pursuant to Proposition 65:

WARNING: This product can expose you to chemicals, including chromium, which is known to the State of California to cause cancer or reproductive toxicity. For more information go to www.P65Warnings.ca.gov.

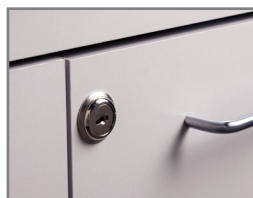
1



Options



066 Door & Inside Latch Combo



055 Door Locks



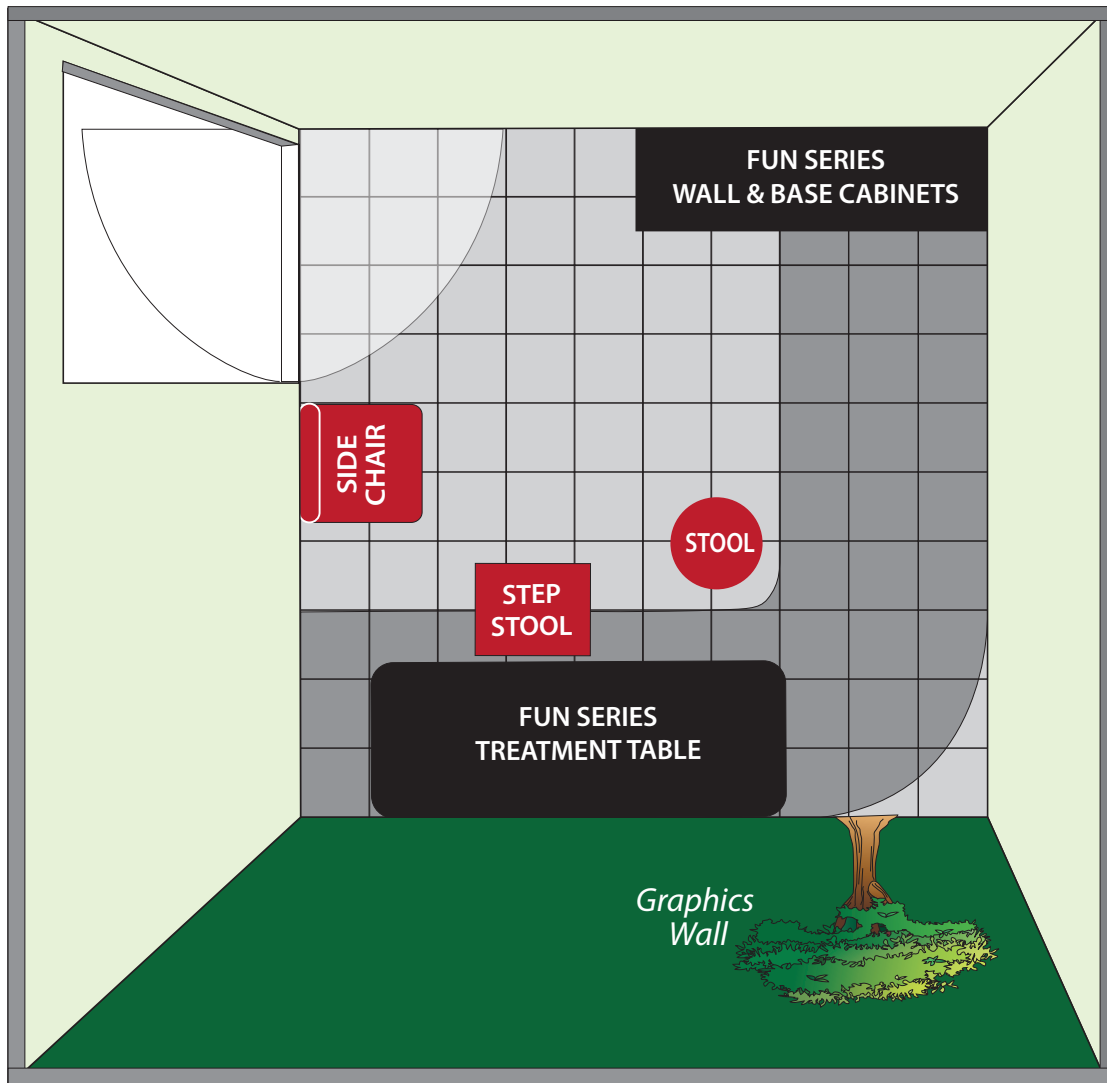
044 Add a Cabinet Drawer



22 Sink & Faucet

10' X 10' FLOOR PLAN

Optional Items in Red



1 Square = 1 foot

NOTE: These are suggested floor plans. Please check local building and fire codes before beginning any construction or renovations.



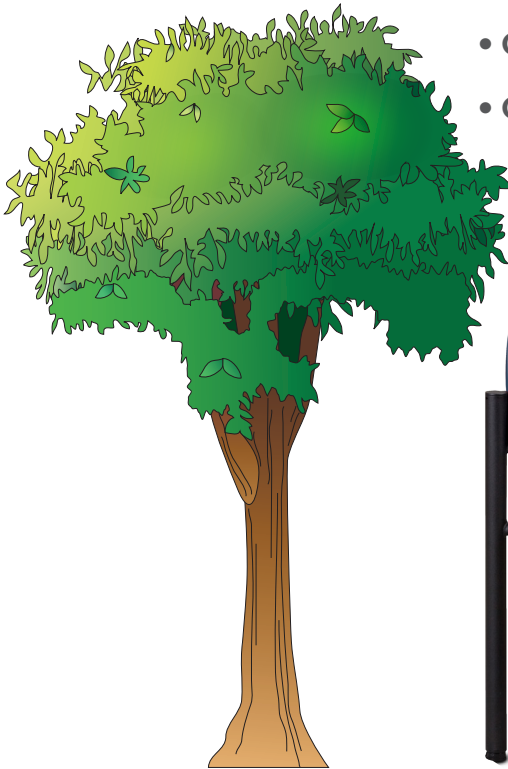
Walls
2046-20 Garden Green
561 Pistachio



Flooring
Medintone® H5301 Gray Light
Medintone® H5302 Deep Gray

OPTIONAL ACCESSORIES *(Shown in photo on front)*

- 03-CC Tree Wall Sticker
- T-70 Clear Unlabeled Sundry Jars (5 in set)
- GS-3020 Double Stainless Steel Glove Box Holder
- C-40 Side Chairs in Royal Blue upholstery (3RB)



800-441-9131 • 717-848-3519
Toll-Free Fax 866-522-1233
Fax 717-843-5871
www.clinton-ind.com