

## Pediatric Series/Aquarium, Extra-Wide, Blood Drawing Chair

### MODEL 66099-AQ

- Extra width accommodates a parent and child
- Custom high pressure, Clinton Kids™, Aquarium flip arms
- Easy-clean laminate arm surfaces with black, T-molded edges
- Graphics are embedded in the laminate and are not affected by cleaning with standard disinfectants
- ClintonClean™ short armrest
- Thick padded seat and backrest
- Extra height reduces bending for staff
- Gray powder-coated frame
- Country Mist, vinyl upholstery on seat and back
- Height adjustable stationary armrest
- Nylon glides
- 400 lbs. load capacity under normal use (181.43 kg)

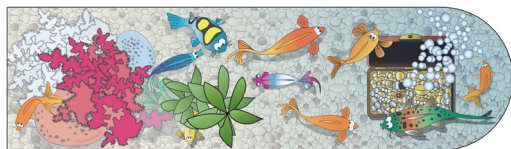
**IMPORTANT NOTE:** Clinton Blood Drawing Chairs are not engineered to restrain a fainting or falling occupant. The chair's occupant should NEVER be left unattended.

**All blood drawing products are non-returnable unless they are unused in unopened, original packaging.**

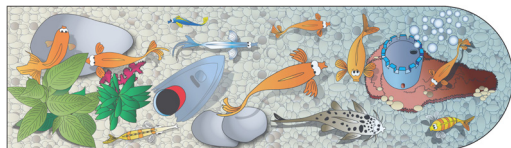


#### MODEL 66099-AQ SPECIFICATIONS

Seat	35" W x 18" D x 26" H
Overall	46" W x 27" D x 42" H
Arm Height Range	33" — 39"
Arm Adjustment	6"



*Right Arm*



*Left Arm*



#### Prop 65 Warning

**WARNING:** This product can expose you to chemicals, including chromium, which is known to the State of California to cause cancer or reproductive toxicity. For more information go to [www.P65Warnings.ca.gov](http://www.P65Warnings.ca.gov).

1

#### Upholstery Color

*Country Mist*