

Pediatric Series/Aquarium, Blood Drawing Chair

MODEL 66011-AQ

- Custom high pressure, Clinton Kids™, Aquarium flip arm and right armrest
- Easy-clean laminate arm surfaces with black, T-molded edges
- Graphics are embedded in the laminate and are not affected by cleaning with standard disinfectants
- ClintonClean™ short armrest
- Thick padded seat and backrest
- Extra height reduces bending for staff
- Gray powder-coated frame
- Country Mist, vinyl upholstery on seat and back
- Height adjustable stationary armrest
- Nylon glides
- 400 lbs. load capacity under normal use (181.43 kg)

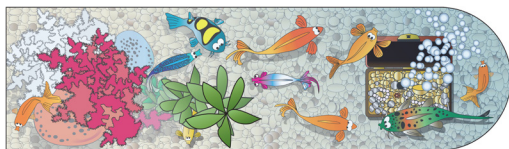
IMPORTANT NOTE: Clinton Blood Drawing Chairs are not engineered to restrain a fainting or falling occupant. The chair's occupant should NEVER be left unattended.

All blood drawing products are non-returnable unless they are unused in unopened, original packaging.

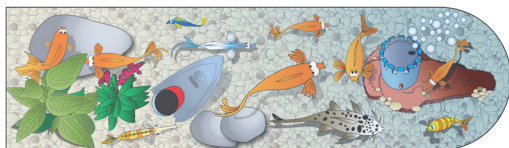


MODEL 66011-AQ SPECIFICATIONS

| | |
|------------------|-------------------------|
| Seat | 17.5" W x 18" D x 26" H |
| Overall | 31" W x 27" D x 42"H |
| Arm Height Range | 33" — 39" |
| Arm Adjustment | 6" |



Right Arm



Left Arm



Prop 65 Warning

WARNING: This product can expose you to chemicals, including chromium, which is known to the State of California to cause cancer or reproductive toxicity. For more information go to www.P65Warnings.ca.gov.

1

Upholstery Color

Country Mist