

## Premium, Flat Top, Classic Series, Treatment Table with Shelving

### MODEL 300

- Same cost for adjustable backrest or flat top  
(Order this model for flat top. Order model 1030 for adjustable backrest.)
- All laminate surfaces enhances durability, cleanability and longevity
- New, high-pressure, laminated aprons & H-bracing
- New, ultra-durable, PVC-laminated, solid, hardwood legs with levelers
- H-brace construction
- Laminate, tiered tiered shelf, storage compartments
- Legs have pre-inserted carriage bolts for fast easy assembly
- Seamless, rounded corner top
- 2" of firm foam padding (5 cm)
- Choice of upholstery colors
- Fast, easy assembly with basic tools
- 400 lbs. load capacity under normal use (181 kg)



### SPECIFICATIONS

300-27	72" L x 27" W x 31" H
300-30	72" L x 30" W x 31" H
300-38	78" L x 30" W x 31" H

California residents please be advised of the following, pursuant to Proposition 65:

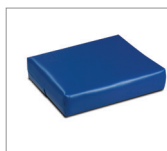


**WARNING:** This product can expose you to chemicals, including diisononyl phthalate (DINP), which is known to the State of California to cause cancer. For more information go to [www.P65Warnings.ca.gov](http://www.P65Warnings.ca.gov).

2



### Options



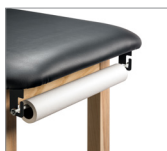
20- small Pillow



034- Paper Dispenser & Cutter Combo



040- Paper Cutter



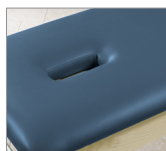
030- Paper Dispenser



005- Special Height



006- Special Length

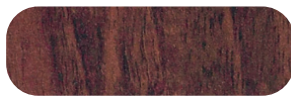


009- Nose Hole

### Laminate Overlay Finishes



Maple/Natural



Dark Cherry



Gray

### Upholstery Colors



Slate Blue



Wedgewood



Royal Blue



Desert Tan



Burgundy



Country Mist



Warm Gray



Gunmetal



Black